



DESIGN AWARD HOUSING

SkyOasis @ Dawson

Project Overview

SkyOasis @ Dawson is designed to seamlessly integrate the lush greenery from the adjacent Alexandra Canal Linear Park to enhance the quality of living for residents, offering them a serene environment filled with greenery. The development is envisioned as an urban oasis, which provides a peaceful and tranquil environment within the bustling city, allowing residents and visitors to escape from the hectic pace of urban life and find moments of relaxation and contemplation. Varying the height of blocks gives rise to an interesting and dynamic skyline.

The development offers a total of 1,192 residential units with convenient access to a range of amenities such as an eatery, a mini-mart, a selection of shops and a childcare centre. It comprises 6 residential blocks and features a multi-storey car park interconnected with a single-storey basement car park. A series of landscaped greenery at various levels terminates at an interesting sloped playground built into the side of the amenity building.



Residential blocks are designed with varying tower heights to break the monotony of the urban skyline, creating a welcoming urban relief with seamless connection with the linear park and its surroundings



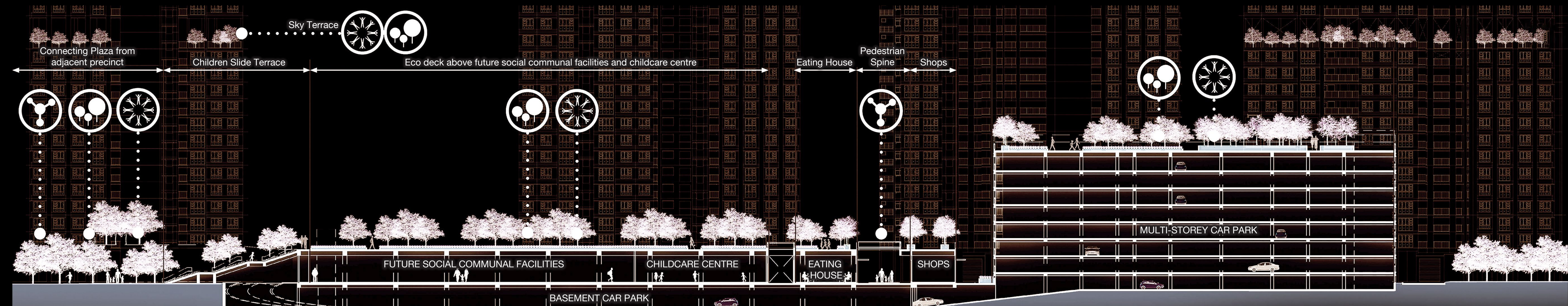
Serene community living room with scenic botanical garden view, a sky oasis from a busy city life



Children playground integrated into sloping landscape



Relaxing space surrounded by lush greenery



A central pedestrian throughfare sits atop the basement car park, providing clear segregation between vehicular and pedestrian circulation



An inviting entrance and drop-off porch that exudes a resort-like ambiance, welcoming residents to an oasis of calmness



An adventure slope designed for children to enjoy

Landscape and Community

Landscape spaces at SkyOasis @ Dawson offer varied communal amenities and are designed to be integrated with its surroundings.

An eco-deck on the second level functions as an extension of the Alexandra Canal Linear Park, providing spaces for enjoyment for those living within and around the estate. These amenities include a children's playground, slide terrace, adventure slopes and adult fitness stations.

A central lawn located between the residential blocks accommodates a variety of recreational and communal activities for social gatherings, such as a multi-generational playground, fitness stations, a jogging track, resting shelters, and pergolas. These amenities are surrounded by lush greenery to create a comfortable and pleasant setting.

A central pedestrian thoroughfare, flanked by a wide selection of shops, guide residents from the residential blocks to the linear park and public transport nodes. Meticulous detail is also given to the design and execution of ground-level spaces, such as pavilions and drop-off porches. The different levels within the development are integrated with play equipment to encourage play and exercise.



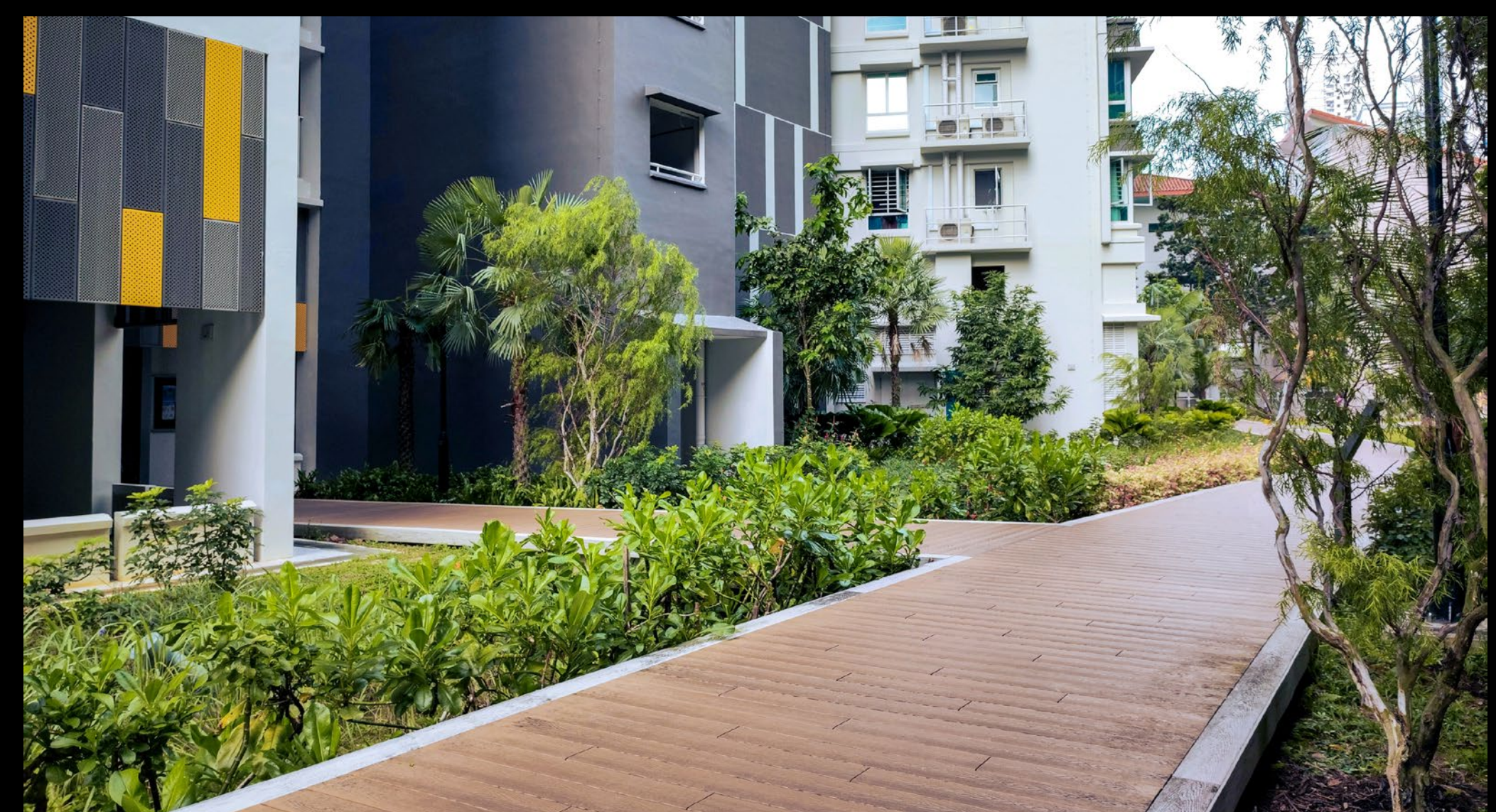
Maximising vehicular-free thoroughfares for residents to access precinct's green spaces



Central lawn with insect-themed multi-generational playground



A community garden open to everyone, offering a therapeutic escape from the hustle and bustle of city life



Elevated timber boardwalk over rain garden



Intricate architectural details at precinct pavilion